

we're here, so you can be there



The Sick
Children's
Trust



Annual Report

1st April 2007 - 31st March 2008

Contents

- | | |
|-------------------------------------|--|
| 1. Chairman's Report | |
| 2. Our Vision and Mission | |
| 4. Our 'Homes from Home' | |
| 6. Fundraising | |
| 7. Communications & PR | |
| 8. Events | |
| 9. Management & Governance | Volunteers |
| 10. Plans for the Future | 'Homes from Home'
Communications
Human Resources |
| 11. Plans for the Future | Events
Fundraising |
| 12. Financial Focus | Income Sources |
| 13. Expenditure | |
| 14. Summarised Financial Statements | Balance Sheet |
| 15. Auditors' Statement | |
| 16. Acknowledgements | Charity Details |

Chairman's Report

Welcome to The Sick Children's Trust Annual Report 2007-8. Thanks to the wonderful support of our donors and stakeholders we have had an excellent year.

Everything we do is driven by the needs of the families who so desperately need our support, and with our bedroom occupancy rate rising to 91 % across the country, it is clear there is a need for us to help even more families. I am therefore delighted to report that in 2007 we were able to offer an additional bedroom at Guilford Street in London, taking the number of rooms available to 88. Our plans for an extension in Newcastle, a new and enlarged Eckersley House in Leeds, and an extra room in Sheffield from 2008-9 will enable us to continue our measured and steady growth in the future.

I am proud of the charity's ability to deliver high quality facilities at a very reasonable rate of expenditure. In 2007 we were able to continue our provision of free facilities to each family we support at a cost to the charity of just £25 per night – a great achievement and testament to the sound financial management of The Sick Children's Trust.

Income for the year has also been very positive, with a total of £1,065,490 raised. This represents an increase of 40 % on the previous year. I feel inspired by the many individuals and organisations who have donated money, time or expertise. On behalf of the charity and all the families we help, I would like to thank you all for your continued support.



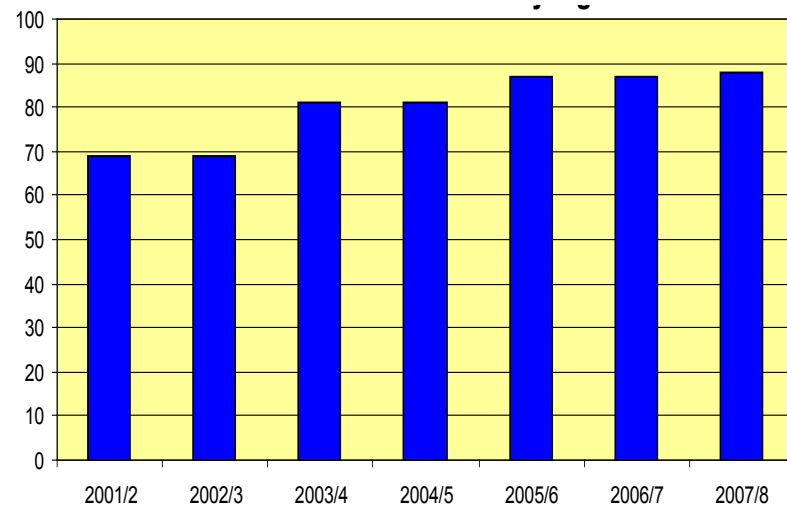
Stephen Catlin
Chairman

The SCT's Vision for the Future

The Sick Children's Trust believes that no child should be separated from their family while in hospital receiving treatment for serious illness. We believe in helping the most basic of medicines to work - family, love and support.

The SCT's Mission

To provide high quality 'Home from Home' accommodation for families whose children are receiving hospital treatment for serious illnesses. The Sick Children's Trust exists to support and promote the child's recovery and further to support the fabric and well being of the family as a whole. In carrying out this mission it will ensure that the highest standards of service are applied throughout.



Number of bedrooms available in our 'Homes from Home' accommodation every night

Objectives

The object for which The Sick Children's Trust was established is to promote and further the care, relief and treatment of sick children at any hospital in Great Britain and Northern Ireland.

To promote the treatment and recovery of children in hospital by providing essential accommodation and amenities for parents, guardians, relatives and friends in need thereof when visiting such children.

To purchase and provide toys, games and play facilities for children being treated at hospital and for any children visiting them.

To provide facilities and assistance to parents, guardians, relatives and friends of sick children in order to promote the welfare of such children.

Acquire property for the promotion of the purpose of The Sick Children's Trust.

Homes from Home

The Sick Children's Trust was established in 1982 to provide support and accommodation to the families of seriously ill children at hospitals around the country. The SCT now provides seven 'Homes from Home' for families:

Rainbow House & Guilford Street House, London
Great Ormond Street Hospital

Eckersley House, Leeds
St James's Hospital

Crawford House, Newcastle-upon-Tyne
The Royal Victoria Infirmary

Acorn House, Cambridge
Addenbrooke's Hospital

Treetop House, Sheffield
Sheffield Children's Hospital

Stevenson House, London
Royal London Hospital

The houses vary in size and layout but the key elements remain the same: homely accommodation close to the children's wards with private family bedrooms and communal living areas.

Our House Managers are at the heart of our work; responsible for the smooth running of the house and ensuring parents' needs are met so that they can spend more time with their children. They also support families when they need someone to talk to or a shoulder to cry on.

“Crawford House helped us to cope both emotionally and physically”



In February, our new born baby son Curtis was rushed to The RVI in Newcastle for emergency surgery. At just three days old our tiny baby was already having his first operation. Curtis was diagnosed with Hirschsprung's disease – a blockage of the large intestine due to improper muscle movement in the bowel – which affects one in 5,000 babies.

We found ourselves miles away from home with a seriously ill baby, but having just given birth, I desperately needed rest myself. Thankfully we were offered a room at Crawford House, The Sick Children's Trust 'Home from Home' based at the RVI for the five weeks Curtis was receiving treatment.

Crawford House offered a sanctuary away from the ward which helped us to cope both emotionally and physically; somewhere we could catch up on sleep or prepare some food, safe in the knowledge that we could be back on the ward within minutes.

We are all back home now, but Curtis still has a few more operations to go and will be affected by Hirschsprung's disease all his life as it is something that can be treated but not cured.

We now offer 88 rooms to families every night of the year

If it was not for Crawford House we would have been really stuck, I can't thank The Sick Children's Trust enough for providing a 'Home from Home' so we could stay near to our new born baby son when he needed us most.

Nikki, Curtis' mum

Homes from Home

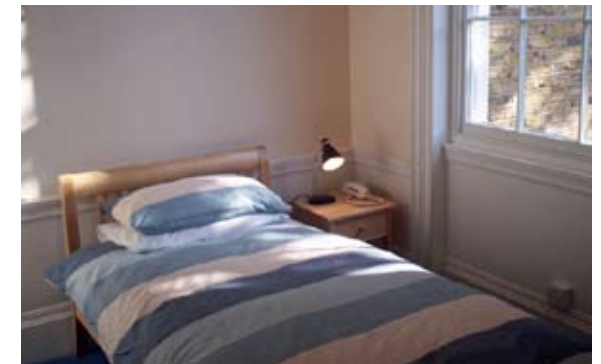
During the year the 'Homes from Home' have been able to offer 88 rooms per night for families, an increase of one room due to work carried out at the house in Guilford Street, London. This turned the house from 8 to 9 bedrooms. The average occupancy across the organisation increased by 3% to 91%.

Rainbow House, our property at Gray's Inn Road London, is our oldest 'Home from Home' and was in need of refurbishment. No major work had been carried out at the house for several years, so we were looking at revisiting the space and injecting some more light and warmth. Funds were successfully secured and work commenced at Rainbow House early in 2008. All of the bedrooms were re-decorated, new carpets laid, a new kitchen fully fitted with appliances and new furniture placed throughout the house. The house has been transformed into something more welcoming and relaxed where families with children can spend valuable time together.

A similar refurbishment programme is planned for our 'Home from Home' at Guilford Street, London, later in the next financial year 2008-9.

In keeping with the national trend to centralise paediatric services, Newcastle NHS Trust announced its plans to build a new children's hospital on the Royal Victoria Infirmary site. The existing 'Home from Home', Crawford House, currently has 16 bedrooms, which will not be sufficient once the additional paediatric beds become available at the hospital. This will lead to an increase in demand for our facilities and plans are now in place for an extension onto the currently derelict 3rd floor of Crawford House. This will allow The SCT to provide seven additional bedrooms to families every night of the year.

Our team of House Managers continue to work together with families who have sick children who are staying in hospital. Where possible the House Manager visits the families on the wards to ensure The SCT is looking after their needs. Whilst on the ward other families and carers in need can also be made aware of the service. The House Manager is key in providing the type of environment that families seek, whether it be supportive, caring or a time of peace and quiet reflection.



“If he gets frightened in the middle of the night I’ll be giving him a hug within minutes.”

My 15 year old son Kevin was rushed to Sheffield Children’s Hospital in January when he was hit by a car. He suffered terrible head injuries, was left paralysed down his left side and has no short term memory.

Since Kevin was admitted to hospital, I have been staying in Treetop House, and to be honest, I don’t know how I would have coped over the last few months had the ‘Home from Home’ not existed.



I am a single parent with three other children and while I have to be near Kevin at all times, it’s also vital that I am there for my other children too. Thanks to Treetop House, we can all be together at this time, when we need each other the most.

My five year old son Mikhail and 18 year old daughter Candice have been staying with me; it’s very difficult for Mikhail to understand what is going on but by being here with me and visiting Kevin, he is much more able to cope with the situation.

My other daughter Natasha who is 21 years old, lives in Barnsley with her partner and baby, but comes to visit at weekends.

Staying in the ‘Home from Home’ enables us to have a family dinner together and talk through our emotions away from the public wards. Plus I can make food for Kevin who is a very fussy eater!

It’s been a wonderful boost for Kevin; I know it helps him to stay calm and concentrate on getting better knowing we are always close by. So if he gets frightened in the middle of the night, the ward will call me and I’ll be giving him a hug within minutes.

Being a single parent, I have found the network of other families staying in Treetop House a powerful source of support. In front of my children I need to be strong, but with other parents I can be open and honest, they know how I’m feeling and it’s been a huge help knowing there is always a shoulder to cry on.



The Sick Children’s Trust really has helped to keep my family together in this often scary and vulnerable time – I can’t thank them enough for taking care of us all.

Nicky Bonser, Kevin’s Mum

Fundraising

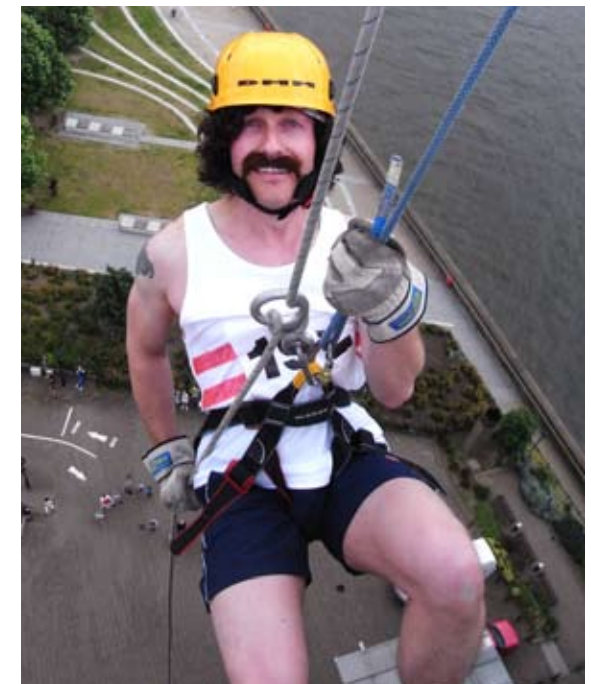
The Sick Children's Trust has had a very successful fundraising year, with good income growth, in a year in which there were no major capital projects to fund.

The Newsletter and Direct Mail Appeals continue to ensure the charity's profile is maintained amongst our valued donors. The donors continue to give generously to the charity year on year. In 2007, our direct appeals raised a total of £21,271 an increase of 37% on the previous year (£11,093 from Direct Mail and £10,178 from Newsletter appeals) compared with (£11,261 from Direct Mail and £4,309 from Newsletter in 2006). It is hoped that this source of income will continue to rise following a planned review of this activity in 2008.



The Sick Children's Trust is always inspired and delighted by the loyal support of individuals and families in the community who organise fundraising events on behalf of the charity. This year £107,452 was raised in this way which not only helps cover running costs but also raises valuable awareness through coverage in local media.

As always, the Cambridge Fundraising Committee continued to be a great source of support for Acorn House, Cambridge raising an impressive £25,000 through a programme of local events including talks and tea parties. Carole Myer the Chair and her fellow committee members have again produced a significant proportion of the running costs for Acorn House. This is a huge support, both to the families staying there, and the fundraising team.



Two new fundraising committees were formed this year. Sheffield Fundraising Committee as a result of a fundraising event that took place in November 2007, and Friends of Eckersley House (Leeds) by two family house users, Gill Parsons and Simon Widdop. The Sheffield event raised £2,412 and the entertainment was provided by Mark Storey and his partner Lisa Dunn ex-house users of Treetop House, Sheffield. We are so grateful for their support.

3,900 – how many families we can help every year

Communications & PR

It has been another successful year for the communications department; not only implementing the regional media relations programme but also securing some national media coverage too (such as a profile on a House Manager in Essentials magazine). Work in this area helps to increase public awareness and understanding of the charity which in turn helps to increase revenue.


Robert Fletcher, a highly experienced advertising and image consultant, was brought onboard to steer the development of a new identity for the charity. Considerable time, thought and energy have gone into the new logo and image design. Robert gave a presentation of initial design ideas to the board of Trustees in December 2007, and a final design decision was reached early spring 2008. The new logo and image will be fully introduced during the course of the next financial year 2008/9.

It is hoped that the new identity will further help to raise awareness of The Sick Children's Trust by helping the charity to stand out in the crowded not-for-profit arena, which will in turn increase support for the charity through a more professional image and encouraged confidence in our work.

A new project was initiated called the 'Book of Wishes' – where a host of celebrities were asked to provide words or drawings of comfort and support for families staying in the 'Home from Home'. There has already been a great response, with 'wishes' coming in from all corners of the celebrity world. It is anticipated that once we receive the required amount of celebrity responses, work will begin on compiling the entries into an appropriate format which will be presented to each 'Home from Home'.

The department has worked closely with the Community Fundraiser to ensure maximum publicity of community events. Valuable awareness is gained as events are better publicised in the local media and other publications. As a result community fundraising revenue has grown alongside an increase in sponsorship for local fundraising activities.

The website was given a complete overhaul during the year and the new site went live in December 2007. The overhaul provided a fantastic opportunity to change the interface and structure, making it easier for users to navigate. The end result is a much cleaner, sharper and robust look with many new added features including a DVD film about The Sick Children's Trust incorporating three family's experiences. Once the new identity is rolled out next year, the website will be updated to match the charity's new image and integrate the new colours.



£25,000 – the amount our re-brand would have cost had Robert Fletcher not donated his time and expertise completely free of charge

Events

The events programme continues to go from strength to strength.

The 5th 'Stars Behind Bars' took place in September 2007 and is an excellent example of this. The event has grown in both attendance and income, with over 300 guests helping us to raise £8,028.

The Bedlam campaign took place for the 4th year running and raised over £3,553. This campaign has been established on a good sound foundation but for the future we will be looking to review and build on the success already achieved.



The single most successful fundraising event was 'A Magic Moment' held at The Magic Circle Headquarters. The evening raised over £68,000 with the auction alone raising an incredible £40,500 from just three lots.

The 25th anniversary celebrations were successful, with a Birthday Present campaign raising £1,000. Each of the 'Homes from Home' held birthday parties throughout the summer of 2007, families, supporters and volunteers joined in the festivities.

A Birthday Reception was held for supporters at the Catlin Underwriting offices in September 2007. The Bishop family, who were ex-house users from Stevenson House, Whitechapel, London, spoke about their experience whilst staying in the 'Home from Home'. The event proved to be very rewarding with donations totalling £30,000 having been received following the event.



£822,791 - how much it cost us to provide our network of 'Homes from Home' in 2007/08

Management & Governance

The Sick Children's Trust is currently governed by a board of 9 trustees in accordance with charity law. The maximum trustee members at any one time would not exceed 12 and would be no less than 8. Trustee recruitment and appointments are governed by a framework that sets out good practice. The board is responsible for the strategic direction and policy of the charity, meeting 4 times a year. They are committed to ensuring that The SCT is run in an open and honest way.

The CEO has the delegated responsibility for general administration of the charity, and reports to the board quarterly on a full range of policies. These cover every area of charity activity and are constantly updated in line with new legislation and developments in good practice.

In the 'Homes from Home', 7 full time House Managers and 7 part time assistants are employed across the country and are managed by the House Operations Manager. A Head of Fundraising and Head of Communications report to the CEO (who manages Finance). All members of staff are clear about their individual management and operational service responsibility.



During the year we said goodbye to one of our trustees Jack Kirkland. Jack served a very constructive term bringing many rewarding developments to our events programmes. We wish him well with his future activities.

We were pleased to welcome Elizabeth Warren (an HR specialist) and Soren Tholstrup (a previous supporter of The SCT) who will be supporting fundraising.

A Local Management Committee whose members include clinical and non clinical staff for the hospital and local interested parties operate for each 'Home from Home' - this allows the delivery of better outcomes for the families.

Volunteers

The Sick Children's Trust benefits from the hard work and dedication of many different kinds of volunteers. These range from individuals who volunteer time to help with fundraising events, to organised and dedicated groups of volunteers such as the Cambridge, Sheffield and Leeds committees.

We are grateful for their help in this way as they contribute significantly to the total funds raised.

Plans for the future

Our 'Homes from Home'

In December 2007, The Leeds NHS Trust announced the relocation of all paediatric services from St James's Hospital to the Leeds General Infirmary located across town. Discussions are taking place as Leeds NHS is in the process of identifying a suitable property which will enable us to relocate Eckersley House to the new site. Due to the good partnership between the Leeds NHS and The SCT, it is envisaged that the new facility will become bigger and better, extending its services to more families.

Communications

In order to attract fundraising support, it is imperative that potential supporters know about us and are aware of the service we provide. Therefore the next year will see a complete roll out of our new identity through all aspects of The Sick Children's Trust such as marketing literature, in-house promotion, stationery, merchandise and the website.

We will be working together with the House Managers to strengthen our Family Ambassador support in order to further heighten awareness of our 'Homes from Home'.

We will also pro-actively seek full support of our fundraising appeals in regional media, as well as looking to enhance our overall media coverage programme.

Human Resources

The SCT's people are its most valuable resource and their health, safety and well being are essential to the charity's ability to deliver high quality support to the families and carers who stay with us.

With any new initiatives we want to provide good career opportunities and challenges for existing staff but also attract the best new staff.

Plans for the future

Events

The events organised by The Sick Children's Trust are a successful part of our fundraising function. In 2008 there are three key aims; to increase the net amount raised through The Sick Children's Trust events; increase the profile of the organisation amongst the general public, particularly in areas where we have 'Homes from Home'; and, closely linked to the second goal, to increase the number of regional events. Specifically, there are plans for events in Leeds, Sheffield and Cambridge.

National events include our annual London party night, Stars Behind Bars, a second 'Magic Moment' event in February 2009, and the anniversaries of Rainbow House (25th) and Stevenson House (5th).

Fundraising

The Fundraising team faces three key challenges in 2008/9: to raise sufficient income to complete the extension at Crawford House, initiate a new capital appeal in Leeds, and to meet the running costs of these and all our other 'Homes from Home'.

Our Raise the Roof appeal at Crawford House gained momentum even before the appeal was officially launched when, in March 2008, Newcastle Healthcare Charity pledged £235,000 towards the appeal. This represents approximately 50% of the target. It is hoped that this will help encourage many other potential supporters to contribute to this important project.

The running costs of all our 'Homes from Home' continue to remain relatively stable but inevitably they will rise once the expansion at Crawford House is completed.

Running costs are always more difficult to raise than capital costs and it remains a key priority of the fundraising team to encourage unrestricted income.

To help us achieve this goal, we will carry out a review of Direct Mail fundraising in 2008/9 and continue to grow our portfolio of events as well as increasing our promotion of legacy giving.

One completely new area of focus for 2008/9 will be the development and implementation of a major donor giving programme. It is hoped that this diversification of income streams will help provide a new source of support and stability in the charity's fundraising, both in unrestricted and restricted donations.

Financial Focus

The charity raised £1,065,490 during the year, £304,518 more than the previous year. This equates to an increase of 40 %.

This was achieved with the aid of sound financial management and the support of both staff and volunteers who generated this very positive financial outcome for the period.

The fundraising for existing running costs was successful in raising the total funds needed following generous donations from a broad range of areas.

Over £222,317 was raised through a variety of events which is 24 % more than last year.

Over £150,725 was raised through generous donations from Charitable Trusts which is an increase of 28 %.

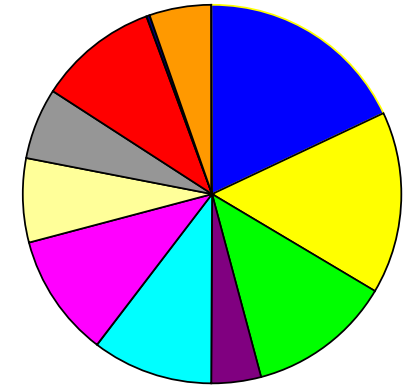
Also over £96,833 was raised through corporate fundraising an increase of 48 %.

Unrestricted income this year was 27 % higher than last year and restricted income this year was 39 % higher than last year (2006-2007). The income split was made up of approximately 42 % restricted and 58 % unrestricted.



Income Sources 2007-8

- Charitable Trusts/Liveries: £192,225
- Corporate/Corporate Foundation: £165,502
- Individual Donations & Gift Aid: £130,981
- Clubs, Schools & Assocs: £44,270
- Supporters' Events: £110,344
- Events by The SCT: £111,973
- Legacies: £75,000
- Donations in 'Homes': £67,315
- Hospitals: £108,250
- Merchandise Sales: £4,047
- Bank Interest: £54,840
- Other: £743



The overall events income increased by 23 % on last year, this was due to our main fundraising event taking place. The number of sponsored events organised by the charity decreased this year due to less matched giving than the previous year, but events organised by house users, ex-house users and volunteers continue to grow, with income increasing by 28 % for this year.

Increases were again seen in donation income from individuals; due in part to the continuing success of the Direct Mail and Newsletter campaigns this year, and also from generous family, friends and relatives in memory of their loved ones. The increase in this category has risen again by 36 %. Legacy income has increased by approximately 236 % on the previous year.

Expenditure

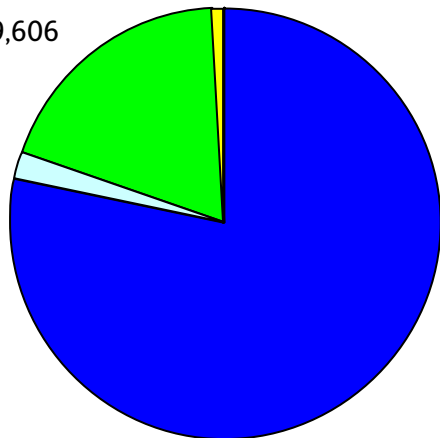
Overall the total expenditure position in the year increased by 17%, with expenditure on charitable activities increasing from £680,187 to £822,791 (21%).

The property costs of the 'Homes from Home' were particularly high this year mostly due to the refurbishments costs of Rainbow House, London and Eckersley House, Leeds. This cost increased from £93,633 the previous year to £223,319 this year, a rise of 139%.

Looking ahead, this cost will be similar in the next financial year as another 'Home from Home' in London receives a similar refurbishment.

Expenditure Breakdown, 2007-8

- Charitable Activities: £822,791
- Capital costs: £19,541
- Cost of generating income: £197,314
- Governance costs: £9,606



Good cost reductions were made in areas such as Insurance down from £25,236 the previous year to £19,617 this year a saving of 22%.

Also the same was realised with Sundry costs (Health and Safety, Computing maintenance etc.) down from £22,823 to £10,766 a saving of 53%.

The charity continues to be vigilant and monitors all budgetary controls.

Capital costs

Capital expenditure decreased this year by 41% and totalled £19,541. These costs were attributed to the Crawford House, Newcastle extension and computing.

Costs of Generating Voluntary Income

This cost increased by under 4% this year, areas such as recruitment grew with a new Head of Fundraising and a Community Fundraiser coming into post.

Event costs increased due to the Gala Dinner event in February 2008, but this was offset by the income received managing to make a healthy profit.



Reserves

The level of reserves has increased during the year as a result of increased income in a number of areas. These reserves are essential for investment in future services and existing 'Homes from Home', continuity in times of change and for the long term stability of the organisation.

Governance

These costs were chiefly due to audit and accountancy costs associated with the charity reporting in line with Charity Commission SORP requirements.

Income and expenditure account and statement of financial activities for the year ended 31 March 2008

	Unrestricted funds	Restricted funds	Total 2008	Total 2007
	£	£	£	£
Incoming Resources				
Incoming resources from generated funds:				
Voluntary income	565,810	440,050	1,005,860	712,730
Activities for generating funds	4,047		4,047	3,915
Investment income	50,295	4,545	54,840	35,146
Other incoming resources		743	743	9,181
Total Incoming Resources	620,152	445,338	1,065,490	760,972
Resources Expended				
Costs of generating voluntary income	197,314	-	197,314	190,628
Charitable activities	454,189	368,602	822,791	680,187
Governance costs	9,606	-	9,606	10,828
Total Resources Expended	661,109	368,602	1,029,711	881,643
Net Incoming Resources before Transfers	(40,957)	76,736	35,779	(120,671)
Transfers between funds				
Net Movement in Funds				
Funds at 1 st April 2007	5,101,155	115,383	5,216,538	5,337,209
Funds at 31 st March 2008	5,060,198	192,119	5,252,317	5,216,538

Balance Sheet at 31 March 2008

	2008		2007	
	£	£	£	£
Tangible assets				
Fixed assets		4,031,436		4,227,350
Current assets				
Debtors and payments	108,897		26,608	
Cash at bank and in hand	1,158,267		1,015,313	
	1,267,164		1,038,921	
Creditors: amounts falling due within one year	(46,283)		(49,733)	
Net current assets		1,220,881		989,188
Net assets		5,252,317		5,216,538
Represented by:				
Designated Funds		4,031,436		4,227,350
General Unrestricted Funds		1,028,762		873,805
Restricted funds		192,119		115,383
Total Funds		5,252,317		5,216,538

Summary Financial Statements

These financial statements are a summary only; those seeking further understanding of the financial affairs of the charity can refer to the full accounts including the Auditors' Report and the Report of the Council of Management, copies of which are available from The Sick Children's Trust, 80 Ashfield Street, London, E1 2BJ. These were approved on 23rd September 2008 and have been filed with the Charity Commission and Companies House. The full accounts have been audited and an unqualified opinion was received.

Acknowledgements

We would like to thank all our donors without whose support our work would not be possible.

This year we received a substantial donation from one kind donor through their legacy to The Sick Children's Trust. We are very grateful for their generosity in contributing to the future of the charity in this way:

Mr Louis T Stanley

We are very grateful to all the individuals, charitable trusts and companies that supported our work in 2007-8. The following generously donated £5,000 or more:

The 29th May 1961 Charitable Trust
 The Barbara Ward Children's Foundation
 Barclays Capital
 BBC Children in Need
 Bibby Line Group - Charity Trust
 Cambridge Fundraising Committee
 Candlelighters
 Catlin Underwriting
 CHK Charities Limited
 Constance Green Foundation
 Donald Forrester Trust
 Simon Garnham
 Mark Glatman
 GMS Estates Limited
 The Goldsmiths' Company Charity
 Great Ormond Street Children's Hospital

Hedley Foundation
 Helen Roll Charity
 John Coldman Charitable Trust
 Leathersellers Company Charitable Fund
 Leeds Teaching Hospitals Charitable Foundation
 Mars UK
 Sheffield Children's Hospital Charity
 Steve McGill
 Merchant Taylors' Company
 Michael Crawford International Fan Association
 Michael Crawford's Children's Charity
 Miller Charitable Fund
 P F Charitable Trust
 The Presidents Club
 Mike & Claire Wren

Independent Auditors' Statement to the Trustees of The Sick Children's Trust

We have examined the summarised financial statements of The Sick Children's Trust.

Respective responsibilities of trustees and auditors

The trustees are responsible for preparing the summarised financial statements in accordance with the recommendations of the charities SORP.

Our responsibility is to report to you our opinion on the consistency of the summarised financial statements with the full financial statements and Trustees' Annual Report. We also read the other information contained in the summarised annual report and consider the implications for our report if we become aware of any apparent misstatements or material inconsistencies with the summarised statements.

Basis of opinion

We conducted our work in accordance with Bulletin 1999/6 'The auditors' statement on the summary financial statement' issued by the Auditing Practices Board for use in the United Kingdom.

Opinion

In our opinion the summarised financial statements are consistent with the full financial statements and the Trustees' Annual Report of for the year ended 31st March 2008.

Kingston Smith LLP
Chartered Accountants and Registered Auditors
Devonshire House
60 Goswell Road
London EC1M 7AD

President

Michael Crawford OBE

Vice Presidents

Peter Baldwin
Dame Judi Dench OBE
Loyd Grossman OBE
Gary Lineker
Christopher Timothy

Trustees

Gary Boom
Stephen Catlin (Chairman)
Peter Cunard
Jack Kirkland (resigned 20 September 2007)
Stephen Masters (Secretary)
Portia Mishcon
John Pincott (resigned 1 June 2008)
Patrick James Rigby
Soren Tholstrup (appointed 20 September 2007)
Pernille Tholstrup-Howells
Elizabeth Warren (appointed 11 March 2008)

Head Office

The Sick Children's Trust, 80 Ashfield Street, London E1 2BJ
Telephone: 020 7791 2266 Fax: 020 7709 8358
email: info@sickchildrenstrust.org www.sickchildrenstrust.org

The Sick Children's Trust

Charity Registration Number: 284416
A company limited by guarantee, registered in England: 1618435