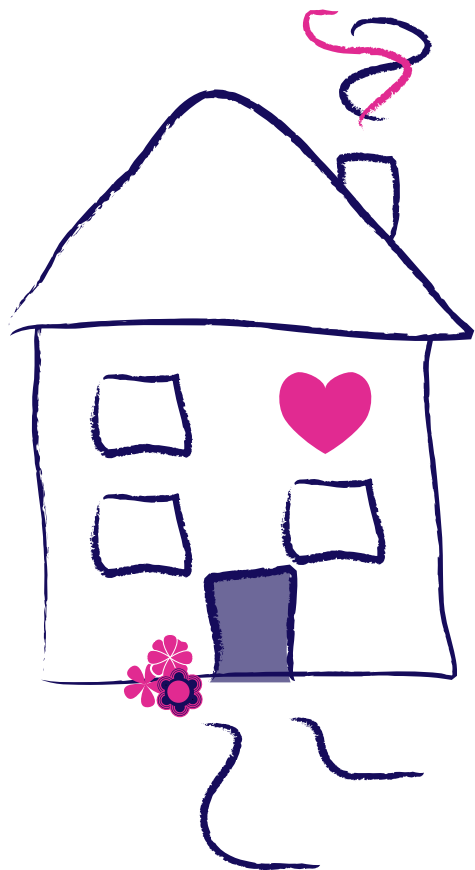


# Eckersley House

Home from Home



House Manager: Jane McHale

0113 392 6505

[jane@sickchildrenstrust.org](mailto:jane@sickchildrenstrust.org)

Eckersley House  
3-5 Belmont Grove  
Leeds  
LS2 9DE

we're here, so you can be there



**The Sick  
Children's  
Trust**

Eckersley House was originally opened in 1984 at St James's Hospital following a bequest of Robert Eckersley, the late husband of Dolores, father of Mark, Julian, Louise and stepson Simon. The Sick Children's Trust would like to thank the

Eckersley family for the founding of the original Eckersley House and Dolores Halpern (nee Eckersley) for her support of this 'Home from Home' at Leeds General Infirmary.



Situated within minutes of Leeds General Infirmary, Eckersley House has been specially designed to ensure access for those with disabilities.

bedrooms linking them to the hospital wards so that families can be contacted immediately in the event of an emergency.

Based over three floors, the house has 22 family bedrooms (four with en-suite), eight bathrooms, three fully equipped kitchen/communal dining areas, three well-stocked playrooms, three shared living rooms and full laundry facilities. A self contained flat is available for families and their sick child when recovering from a liver transplant.

Eckersley House is open 365 days a year and can accommodate 22 families a night. Rooms are allocated to families on a first come, first served basis and are offered to families completely free of charge.



There are also direct telephone lines in all of the family

We are funded solely by voluntary donations from individuals, companies and charitable trusts. The cost of staffing and maintaining Eckersley House amounts to £100,000 a year.



**we're here, so you can be there**



# The Sick Children's Trust

## Our 'Homes from Home'

All of our houses vary in size and layout, but families staying in each of our 'Homes from Home' will have:

House staff for families to turn to when they need someone to talk to or a shoulder to cry on. They are at the heart of our work, responsible for the smooth running of the house and ensuring that parents needs are met so that they can spend more time with their children.

Facilities for brothers and sisters such as play areas with plenty of toys, books and games to help children feel more at home.

Short distances to the children's wards that enable sick children to spend time with their families in the 'Home from Home' when they are well enough.

Direct telephone lines to the wards in all bedrooms so that parents have peace of mind, knowing that they are only a phone call away from their sick child's bedside.

Private bedrooms where it is safe to leave personal possessions.

Fully equipped kitchens to enable families to enjoy home cooked meals together, an important component of family life.

## All our houses...

The Sick Children's Trust provides seven clean comfortable and secure 'Homes from Home' at six hospitals throughout the UK:

Eckersley House, Leeds  
Leeds General Infirmary

Rainbow House, London  
Great Ormond Street Hospital

Guilford Street House, London  
Great Ormond Street Hospital

Stevenson House, London  
Royal London Hospital

Acorn House, Cambridge  
Addenbrooke's Hospital

Treetop House, Sheffield  
Sheffield Children's Hospital

Crawford House, Newcastle-upon-Tyne  
The Royal Victoria Infirmary

**"We were at breaking point when the nurses on the ward suggested Eckersley House. I can't describe what a huge help the house was to us at such a distressing time for our family." Vanessa Jerome**

## Can you help us?...

### Want to raise money but don't know where to start?

Fundraising can be great fun and will help us to raise the £1 million we need every year to keep our houses open and help over 4,000 families annually,

We have a dedicated fundraising team who can help with ideas and promotional materials, and a communication team who can promote your fundraising efforts wherever possible.

Whether you raise money by holding a coffee morning, run a marathon, do a sponsored sky dive, hold a dress down/non uniform day at work or at your child's school, or simply support a fundraising application made by The Sick Children's Trust to your company, your help in raising awareness and funds in the community is vital and can make a real difference to the families we support.

## Head Office

The Sick Children's Trust  
80 Ashfield St  
London  
E1 2BJ

T: 020 7791 2266  
E: [info@sickchildrenstrust.org](mailto:info@sickchildrenstrust.org)  
[www.sickchildrenstrust.org](http://www.sickchildrenstrust.org)

President - Mr Michael Crawford OBE  
Charity Registration No 284416

### Where can I get more information about fundraising?

Simply contact [Jane](#), your [House Manager](#), who can give you more information.

Alternatively you can contact [Vicki Smith](#), your [Regional Fundraiser](#) on [0113 392 6506](tel:01133926506) for an informal chat about ideas, or email [vicki@sickchildrenstrust.org](mailto:vicki@sickchildrenstrust.org)

You can also visit our website: [www.sickchildrenstrust.org](http://www.sickchildrenstrust.org) for more information about fundraising, as well as lots of other ways to help.

### THANK YOU FOR YOUR SUPPORT!

