

Can you help us?

Fundraising can be great fun, so get involved and you can help us to support about 3,500 families every year. It costs less than £30 to keep a family together for one night.

Fundraising at work

Fundraising at work can have many benefits for both the employer and the employee. Could you ask your employer to support us? Whether you hold a raffle, auction, mobile phone collection or dress down day you can enjoy yourself while raising needed funds. Many employers will match fund your efforts so you can make even more of a difference to the lives of the families that we support.

Fundraising in the community

There are plenty of other ways you could help us. You could run a marathon or take part in a sponsored cycle ride. And if you've ever fancied jumping from a plane we could help you to organise a tandem parachute jump. Or perhaps you could organise a cake sale if baking is more your cup of tea?

Head Office

The Sick Children's Trust
3rd Floor, Willow House
17 - 23 Willow Place
London
SW1P 1JH

T: 020 7931 8695
E: info@sickchildrenstrust.org
www.sickchildrenstrust.org

President - Mr Michael Crawford OBE
Charity Registration No 284416

The Sick Children's Trust has endeavoured to ensure that all information in this leaflet is correct at the time it went to press. Some details could change as we develop and improve the services that we offer.

We would like to help you

We have a dedicated fundraising team who can help with ideas and promotional materials, and a communications team who can promote your fundraising efforts wherever possible.

Where can I get more information about fundraising?

Simply contact [Ann](#), your [House Manager](#), who can give you more information.

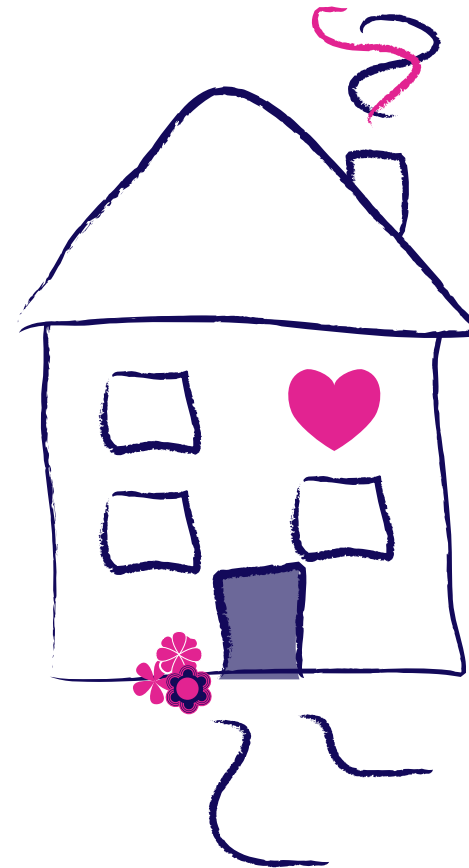
Or you can contact our [fundraising team](#) at our head office (see details below) for a chat about your ideas. Our website www.sickchildrenstrust.org also contains information about fundraising with tips to help you along the way.

Thank you for your support!



Treetop House

Home from Home



House Manager: [Ann Wyatt](#)

0114 2717176
ann.wyatt@sch.nhs.uk

Treetop House
The Sick Children's Trust
Sheffield Children's Hospital
Western Bank
Sheffield
S10 2TH

we're here, so you can be there



Treetop House opened in 2001 and supports families with sick children receiving treatment at Sheffield Children's Hospital. Since opening, Treetop House has helped approximately 350 families every year.

Situated within the hospital Treetop House is only minutes away from the Sheffield Children's Hospital and has been specially designed to ensure access for those with disabilities.



Our 'Homes from Home'

All of our houses vary in size and layout, but families staying in each of our 'Homes from Home' will have:

House Staff for families to turn to when they need someone to talk to or a shoulder to cry on. They are at the heart of our work, responsible for the smooth running of the house and ensuring that parents' needs are met so that they can spend more time with their children.

Facilities for brothers and sisters such as play areas with plenty of toys, books and games to help children feel more at home.

Short distances to the children's wards that enable sick children to spend time with their families in the 'Home from Home' when they are well enough.

Direct telephone lines to the wards in all bedrooms so that parents have peace of mind, knowing that they are only a phone call away from their sick child's bedside.*

Private bedrooms where it is safe to leave personal possessions.

Fully equipped kitchens to enable families to enjoy home cooked meals together, an important component of family life.

* The phone is inbound only at Rainbow House

All our houses...

The Sick Children's Trust provides 7 clean, comfortable and secure 'Homes from Home' at 6 hospitals throughout the UK:

Treetop House, Sheffield
Sheffield Children's Hospital

Crawford House, Newcastle upon Tyne
The Royal Victoria Infirmary

Acorn House, Cambridge
Addenbrooke's Hospital

Eckersley House, Leeds
Leeds General Infirmary

Rainbow House, London
Great Ormond Street Hospital

Guilford Street House, London
Great Ormond Street Hospital

Stevenson House, London
Royal London Children's Hospital



Treetop House has 13 private family bedrooms, 7 bathrooms, a fully equipped kitchen, a communal dining area, a well stocked playroom, a shared living room and full laundry facilities.

Treetop House is open 365 days a year and can accommodate 13 families a night. Rooms are allocated to families on a priority basis and are offered to families completely free of charge.

There are also direct telephone lines in all of the family bedrooms linking them to the hospital wards so that families can be contacted immediately in the event of an emergency.

We are funded solely by voluntary donations from individuals, companies and charitable trusts. The cost of staffing and maintaining Treetop House amounts to £67,000 a year.

we're here, so you can be there